

RHIZOME ARTBASE COMMUNITY PROGRAMS JOIN

[Home](#) / [Artbase](#)[FEATURED](#) | [BROWSE](#) | [TIMELINE](#) | [MEMBER EXHIBITIONS](#) | [ABOUT](#) | [SUBMIT](#)

Crossroads (2000) [🔗](#)

by [Annette Weintraub](#)

ARTBASE SELECTION

[f Like](#) [0](#) [Tweet](#)

CROSSROADS is a project for the Web that explores the capacity of film and advertising culture to shape our sense of place. CROSSROADS creates a series of metaphorical spaces that are constructs of the mythic and actual Times Square/42nd Street area. The viewer can enter multiple (and simultaneous) narratives in the form of 'pseudo films': animated images and a mix of ambient sound, audio monologues and animated texts. These 'pseudo films' incorporate aspects of film genres that are closely identified with Times Square. They explore elements of daily life filtered through the conventions of the noir B-movie, the theater musical and the coming-to-New-York story.

Tags: [42nd St. Development Project](#) [42nd Street](#) [allegory](#) [Animation](#) [Annette Weintraub](#) [audio](#) [Bill Rice](#) [cinema](#) [Courtney Harmel](#) [Documentary](#) [film](#) [Flash](#) [historical](#) [HTML](#) [Jacob Burckhardt](#) [Javascript](#) [Lee Ellickson](#) [Lisa Rifkin](#) [memory](#) [Narrative](#) [public space](#) [QuickTime](#) [Rudy Burckhardt](#) [Seymour B. Durst](#) [New York Library](#) [Squared Times](#) [Times Square](#) [Visual](#)

FULL DESCRIPTION

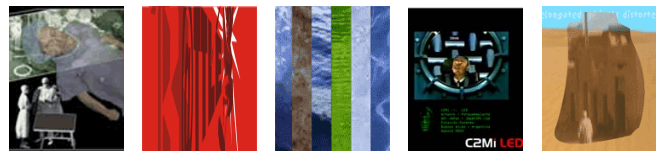
CROSSROADS is a project for the Web that explores the capacity of film and advertising culture to shape our sense of place. CROSSROADS creates a series of metaphorical spaces that are constructs of the mythic and actual Times Square/42nd Street area. The viewer can enter multiple (and simultaneous) narratives in the form of 'pseudo films': animated images and a mix of ambient sound, audio monologues and animated texts. These 'pseudo films' incorporate aspects of film genres that are closely identified with Times Square. They explore elements of daily life filtered through the conventions of the noir B-movie, the theater musical and the coming-to-New-York story. CROSSROADS establishes a space in which the familiar architectural and commercial icons of Times Square and 42nd Street are reconfigured to create a mix of personal myth and public space.

WORK METADATA

Year Created: 2000

Submitted to: Sunday Oct 31st, 2004

RELATED WORKS



COMMENTS

This artwork has no comments. You should add one!

LEAVE A COMMENT

You must be logged in to post a comment. [LOG IN](#)

ArtBase:

Original Url: <http://www.turbulence.org/Works/crossroads/index.html>

Permalink: <http://www.turbulence.org/Works/crossroads/index.html>

Work Credits: Annette Weintraub, *creator*

WANT TO SEE MORE?

TAKE FULL ADVANTAGE OF THE ARTBASE BY [BECOMING A MEMBER](#)

ARTBASE

- about
- member exhibitions
- commissioned essays
- artworks timeline
- browse
- collection policy
- search

EDITORIAL

- features
- artist profiles
- best of
- reviews
- the blog

COMMUNITY

- discuss
- opportunities
- events
- jobs board
- sign-up
- mailing lists

PROGRAMS

- commissions
- events
- exhibitions
- new media resources
- the rhizome archive
- the store

ABOUT RHIZOME

- mission
- history
- press
- staff
- staff blog
- supporters

YOUR ACCOUNT

- view your profile
- edit your profile
- username/password
- [make a donation](#)

RHIZOME AT THE NEW MUSEUM

[Advertise.](#)

[Contact Us.](#)

[Subscribe.](#)

[Donate.](#)

[Policy](#) | [Site Credits](#) | [Site Feedback](#)