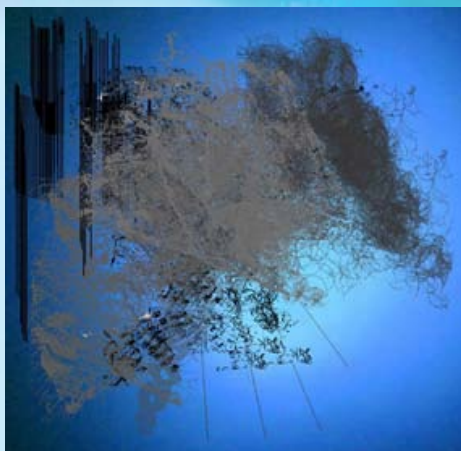


Live Stage: “L-Carrier” by Eli Keszler [NYC]

Tags:
[installation](#) [livestage](#) [music](#) [networked](#)

Jo-Anne
Green

[Turbulence.org](#), [Eyebeam Art & Technology Center](#), and [ISSUE Project Room](#) present: **L-Carrier**. — A Networked Installation and Performance by **Eli Keszler** :: **Performance:** June 7, 2012; 7:00 - 8:00 pm :: **Installation:** June 7-23, 2012 :: Eyebeam, 540 West 21st Street, New York + [Turbulence.org](#) [Needs Safari, Firefox or Chrome; and Speakers/Headphones].



From June 7-23, composer-percussionist *Eli Keszler* transforms Eyebeam’s Project Space with **L-Carrier**, a large-scale, mechanical stringed instrument that will immerse audiences in rich harmonies and sparse, multi-directional rhythms. Fluid, dynamic acoustic sounds will push and pull against the installation’s sonic control. The [website](#) displays the piece’s evolving visual data score, and streams real-time audio from the physical environment. When people go to the website, they activate invisible “targets” distributed around the visual field. As “targets” intercept with Eli’s drawings the code that controls the installation is altered which, in turn, changes the percussive patterns of the strings (at Eyebeam).

On June 7, both the physical and web installations will serve as accompaniment to a live ensemble performance, composed by *Eli Keszler* and featuring *Keszler* with *Ashley Paul*, *Anthony Coleman*, *Alex Waterman*, *C Spencer Yeh*, *Catherine Lamb*, *Geoff Mullen*, and *Reuben Son*.

This event also inaugurates the release of *Eli Keszler’s* double CD **Catching Net**, a collection of installation and ensemble recordings released by the Berlin-based PAN – ACT label.

Biography

Eli Keszler is a composer, artist and multi-instrumentalist based in New York City. He has toured extensively throughout Europe and the US, performing solo and in collaboration with artists such as Phill Niblock, Aki Onda, Tony Conrad, Loren Connors, Jandek, C Spencer Yeh, Ran Blake, and Ashley Paul.

Credits

L-Carrier is a 2012 commission of [New Radio and Performing Arts, Inc.](#) for its [Turbulence](#) website. It was made possible with funds from the *Jerome Foundation* and the *New York City Department of Cultural Affairs*. Additional support has been provided by *ISSUE Project Room*.

L-Carrier is presented as part of Eyebeam’s sound series *Rec.Play.*, a curatorial initiative founded by Eyebeam Creative Director *Roddy Schrock*.

Networked_Performance

Tags [freq](#) [alpha](#)

1 3-D ARG DIY DJ/VJ activist aesthetics agency algorithmic animation app architecture archive art + science artificial asynchronous audio audio/visual augmented/mixed reality avatar bioart biopolitics biotechnology body calls + opps censorship chance cinema city code collaboration collective community conference convergence conversation copyright culture cyberreality dance data distributed e-literature ecology education emergence environment event exhibition fabbing festival film forking free/libre software games generative gesture gift economy glitch global/ization hacktivism history hybrid hypermedia identity im/material image immersive installation interactive interdisciplinary interface intermedia intervention interview labor language lecture light live live cinema livestage locative media machinima mapping mashup media mobile motion tracking multimedia music narrative nature net art networked new media news nonlinear object open source p2p participatory perception performance physical place place-specific platform play political presence public public/private pyschogeography radio reblog recycle reenactment relational remix research responsive robotic second life semantic web simulation site-specific social social choreography social networks software sound space streaming surveillance synesthesia synthetic systems tactical tag tangible technology telematic text theater theory tool touch transdisciplinary tv ubiquitous unconference upgrade! urban video virtual visualization voice wearable web 2.0 webcam webcast wireless workshop writings

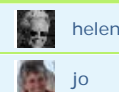
What is this?

Networked Performance (N_P) is a research blog that focuses on emerging network-enabled practice.
[Read more...](#)

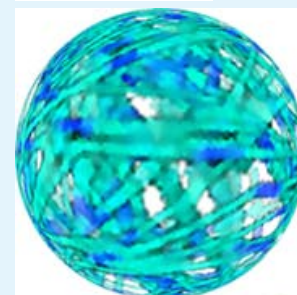
RSS feeds

N_P offers several RSS feeds, either for specific tags or for all the posts. Click the top left RSS icon that appears on each page for its respective feed. [What is an RSS feed?](#)

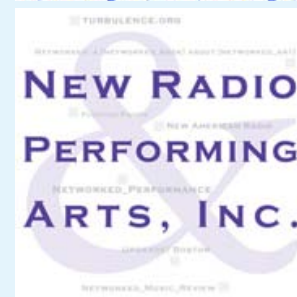
Bloggers



F.Y.I.



networked
 a (networked_book) about (networked_art)



Archives

2012

Jun 4, 13:26
[Trackback URL](#)

Leave a comment

Name (required)

Email (will not be published) (required)

Website

[Dec](#) | [Nov](#) | [Oct](#) | [Sep](#) | [Aug](#) | [Jul](#)

[Jun](#) | [May](#) | [Apr](#) | [Mar](#) | [Feb](#) | [Jan](#)

2011

[Dec](#) | [Nov](#) | [Oct](#) | [Sep](#) | [Aug](#) | [Jul](#)

[Jun](#) | [May](#) | [Apr](#) | [Mar](#) | [Feb](#) | [Jan](#)

2010

[Dec](#) | [Nov](#) | [Oct](#) | [Sep](#) | [Aug](#) | [Jul](#)

[Jun](#) | [May](#) | [Apr](#) | [Mar](#) | [Feb](#) | [Jan](#)

2009

[Dec](#) | [Nov](#) | [Oct](#) | [Sep](#) | [Aug](#) | [Jul](#)

[Jun](#) | [May](#) | [Apr](#) | [Mar](#) | [Feb](#) | [Jan](#)

2008

[Dec](#) | [Nov](#) | [Oct](#) | [Sep](#) | [Aug](#) | [Jul](#)

[Jun](#) | [May](#) | [Apr](#) | [Mar](#) | [Feb](#) | [Jan](#)

2007

[Dec](#) | [Nov](#) | [Oct](#) | [Sep](#) | [Aug](#) | [Jul](#)

[Jun](#) | [May](#) | [Apr](#) | [Mar](#) | [Feb](#) | [Jan](#)

2006

[Dec](#) | [Nov](#) | [Oct](#) | [Sep](#) | [Aug](#) | [Jul](#)

[Jun](#) | [May](#) | [Apr](#) | [Mar](#) | [Feb](#) | [Jan](#)

2005

[Dec](#) | [Nov](#) | [Oct](#) | [Sep](#) | [Aug](#) | [Jul](#)

[Jun](#) | [May](#) | [Apr](#) | [Mar](#) | [Feb](#) | [Jan](#)

2004

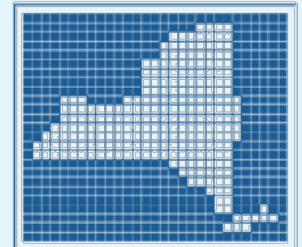
[Dec](#) | [Nov](#) | [Oct](#) | [Sep](#) | [Aug](#) | [Jul](#)

 **turbulence**
COMMISSIONING AND SUPPORTING
NET ART FOR 16 YEARS: 1996-2012

[Networked_Music_Review](#)

Upgrade! Boston


Massachusetts Cultural Council
State of the Arts

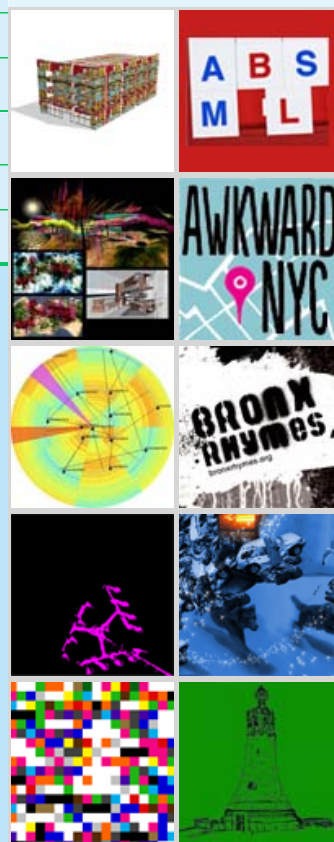


NYSCA

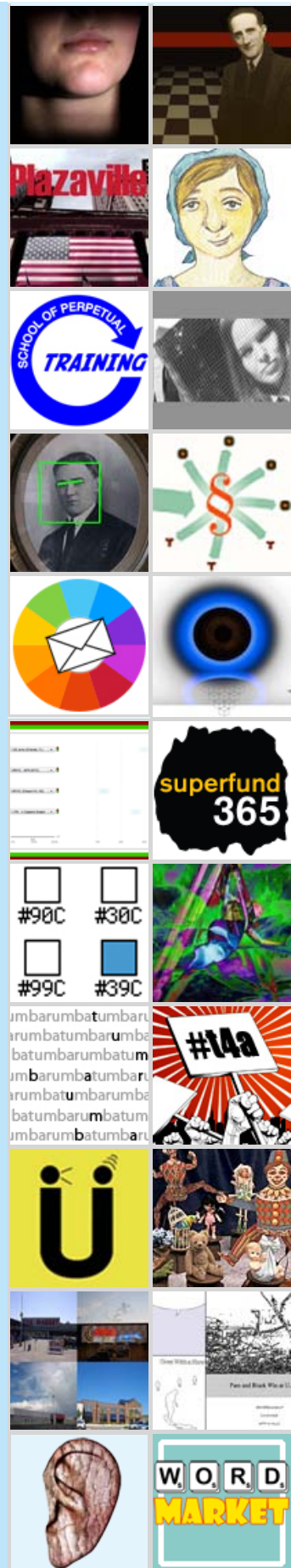


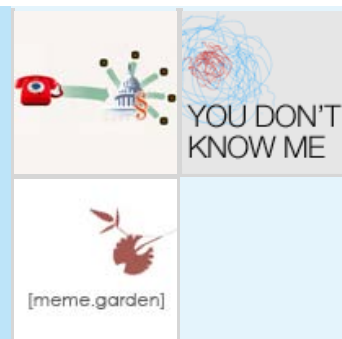
Turbulence Works

These are some of the latest works commissioned by Turbulence.org's net art commission program.









[More commissions](#)

Be Sure to Visit:

#	A	B	C				
D	E	F	G	1001 nights cast	Avatar Body Collision	Connected!	Desktop Theater
H	I	J	K	34 North 118 West	B.L.O.O.D. F.O.R. S.A.L.E.	Ctrl-N Journal	Dialtones: A Telesymphony
L	M	N	O	9 Evenings	Benoit Maubrey	Culture Machine	Diane Gromala
P	Q	R	S	ADaPT	Bikes Against Bush	Cultures of Climate Change	Digital Performance
T	U	V	W	Adrift	Blast Theory	CyberPowWow	Digital Performance Archive
X	Y	Z		Agora Phobia (digitalis)	cairn design	Dancing Beyond Boundaries	Digital Street Game
				ambientTV.net	CatchBob	Daniel Shiffman	Disembodied Art
				Anne Galloway	CitiTag	Database of Virtual Art	Don Ritter
				AudioHyperspace	Cluster	Demonstrate	Drew Hemment
				Auracle	Company In Space	Demor	Eduardo Kac

Design by [Mushon Zer-Aviv - Shual.com](#), built by [Dan Phiffer](#), powered by [WordPress](#).