

## Apartment, 2001



Martin Wattenberg, Marek Walczak, Jonathan Feinberg (EE.UU).  
Interactive Installation  
Additional programming by Jonathan Feinberg

Imagen: Apartment © PILO

### Imagen 111

Viewers are confronted with a blinking cursor. As they cuMarc, rooms begin to take shape in the form of a two-dimensional plan, similar to a blueprint. The architecture is based on a semantic analysis of the viewer's words, reorganizing them to reflect the underlying themes they express. The apartments are clustered into buildings and cities according to their linguistic relationships. Each apartment is translated into a navigable three-dimensional dwelling, thus contrasting between abstract plans/texts and experiential images/sounds.

<http://www.turbulence.org/Works/apartment/>

**Martin Wattenberg (USA)** is a research at IBM whose focuses on visual explorations of culturally significant data. Wattenberg is equally know for his scientific and applied work in the field of information visualization, and for his information-based digital artwork. He received his Ph.D. in mathematics from U.C. Berkeley, M.s. from Stanford University, and A.B. from Brown University.

**Marek Walczak (USA)**, Marek's online and installation pieces merge architecture, net art and performance. Recent project include *WonderWalker*, commissioned by the Walker Arts Center. Other projects include *Adrift*, 1997-2001, a multi-location 3D performance with Helen Thorington and Jesse Gilbert; *Suspension*, 1997, in collaboration with Jordan Crandall, at the Documenta X, Kassel, Germany.

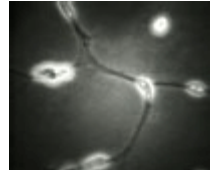
Other projects:

<http://kinacity.com/>

<http://dialogtable.com/>



FORMACIÓN



INVESTIGACIÓN



RECURSOS



EXPOSICIONES



madrid

ÁREA DE LAS ARTES

**CONDE  
DUQUE**  
CENTRO CULTURAL