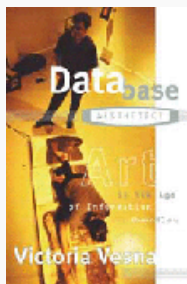


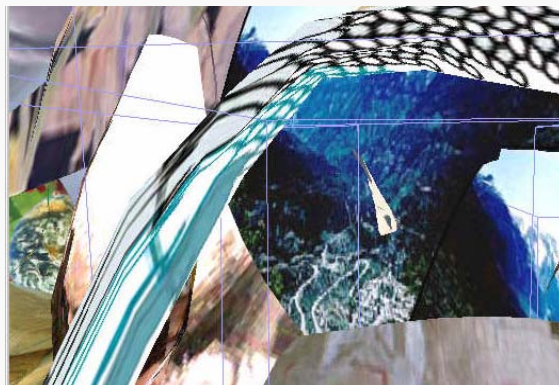
Content

- + Index
- + Authors
- + Projects
- + Readings
- + Book Index
- + Interview
- + Order:



Saturday, 9 Feb 2008

Martin Wattenberg & Marek Walczak - Apartment



In Wattenberg and Marek's *Apartment*, "viewers are confronted with a blinking cursor. As they type, rooms begin to take shape in the form of a two-dimensional plan, similar to a blueprint. The architecture is based on a semantic analysis of the viewer's words, reorganizing them to reflect the underlying themes they express. The apartments are then clustered into buildings and cities according to their linguistic relationships.

Each apartment is translated into a navigable three-dimensional dwelling, so contrasting between abstract plans/texts and experiential images/sounds.

Apartment is inspired by the idea of the memory palace. In a mnemonic technique from a pre-Post-It era, Cicero imagined inscribing the themes of a speech on a suite of rooms in a villa, and then reciting that speech by mentally walking from space to space. Establishing an equivalence between language and space, *Apartment* connects the written word with different forms of spatial configurations."

Experience the project [here](#).

Leave a Reply

Name (required)

Mail (will not be published) (required)

Website

Golan Levin with Martin Wattenberg, Jonathan Feinberg,
Shelly Wynecoop, David Elashoff, and David Becker - The
Secret Life of Numbers »

« Grahame Weinbren - Frames

You can syndicate both the entries using [RSS](#) and the [Comments \(RSS\)](#) . [xhtml 1.0 trans](#) / [CSS](#) .